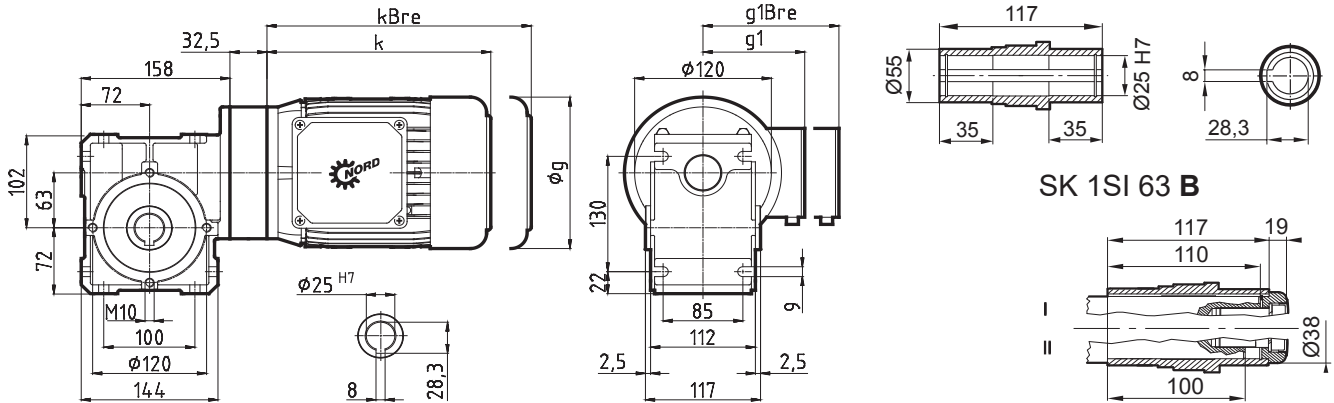


SK 1 SI 63 IEC...



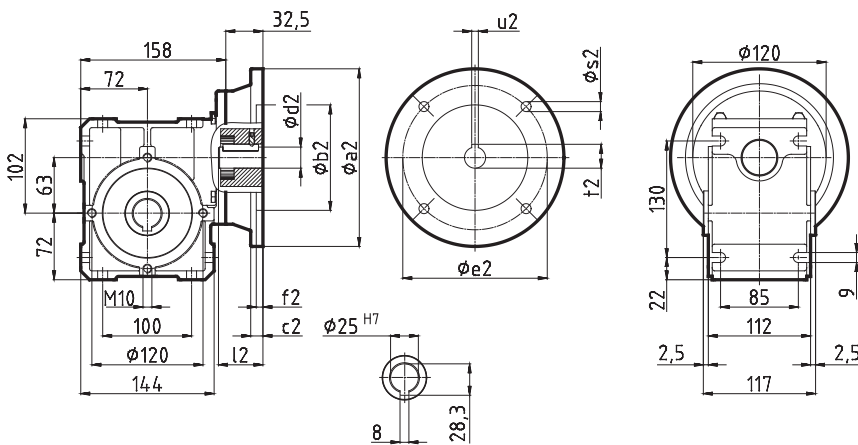
Schneckengetriebemotor



SK 1 SI 63 B

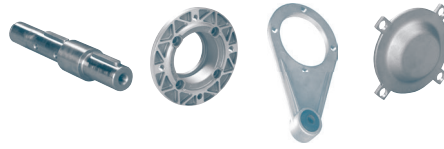
	SK 1 SI 63 IEC63	SK 1 SI 63 IEC71	SK 1 SI 63 IEC80	SK 1 SI 63 IEC90
IE1	63 S/L	71 S/L	80 S / L	90 S / L
IE2	-	-	SH / LH	SH / LH
IE3	SP/LP	SP/LP	- / LP	SP / LP
g	130	145	165	183
g1	116	124	142	147
g1Bre	124	133	143	148
k	192	214	236	276
kBre	248	272	300	351

Schneckengetriebe zum Anbau von IEC-Normmotoren

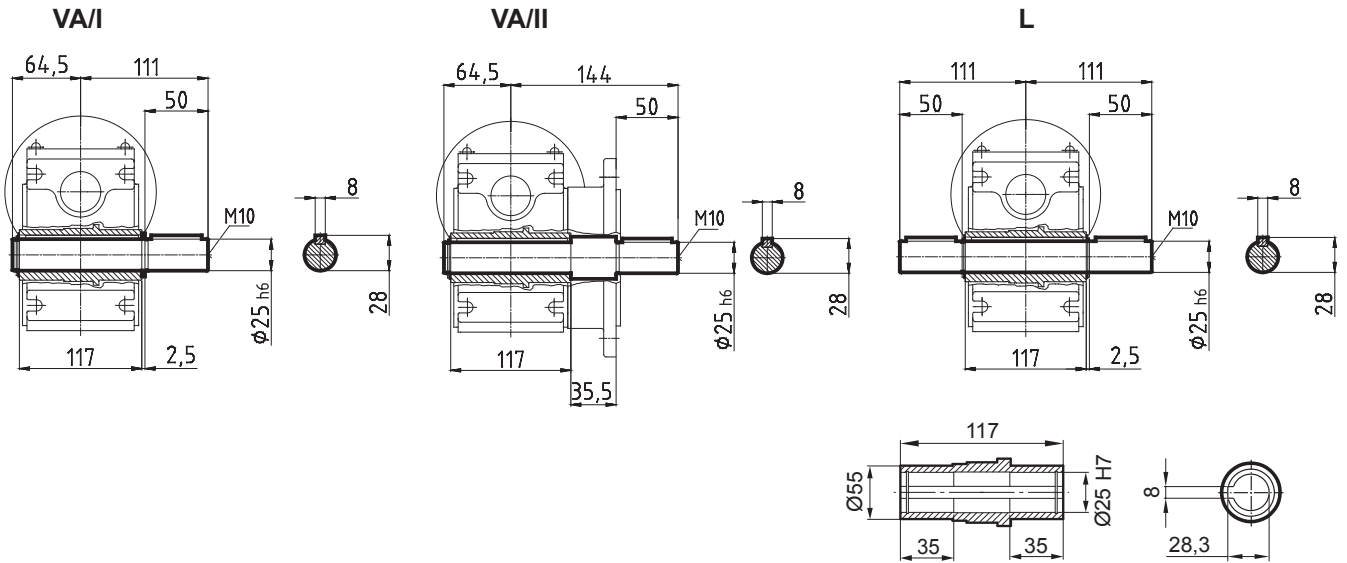


IEC-Normmotoranbau

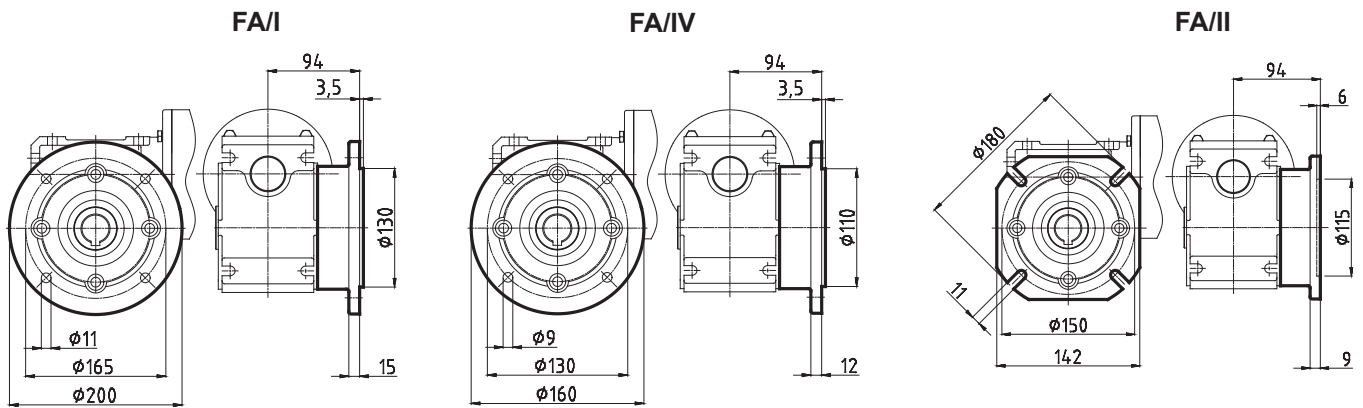
	IEC 56	IEC 56	IEC 63	IEC 63	IEC 63	IEC 71	IEC 71	IEC 71	IEC 80	IEC 80	IEC 80	IEC 90	IEC 90	IEC 90
	B14	B5	B14	B14	B5	B14	B14	B5	B14	B14	B5	B14	B14	B5
	C105	A120	C90	C120	A140	C105	C140	A160	C120	C160	A200	C140	C160	A200
a2	105	120	90	120	140	105	140	160	120	160	200	140	160	200
b2	70	80	60	80	95	70	95	110	80	110	130	95	110	130
c2	-	-	-	-	8	-	-	8	-	8	20	-	8	20
d2	9	9	11	11	11	14	14	14	19	19	19	24	24	24
e2	85	100	75	100	115	85	115	130	100	130	165	115	130	165
f2	3	3,5	3	3,5	3,5	3	3,5	4	3,5	4	4	3,5	4	4
l2	20	20	23	23	23	30	30	30	40	40	40	50	50	50
s2	7	7	6	7	9	7	9	9	7	9	M10	9	9	M10
t2	11,4	11,4	12,8	12,8	12,8	16,3	16,3	16,3	21,8	21,8	21,8	27,3	27,3	27,3
u2	3	3	4	4	4	5	5	5	6	6	6	8	8	8



Einsteckwellen

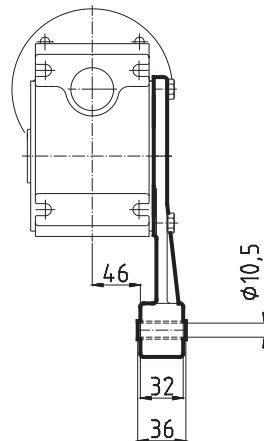
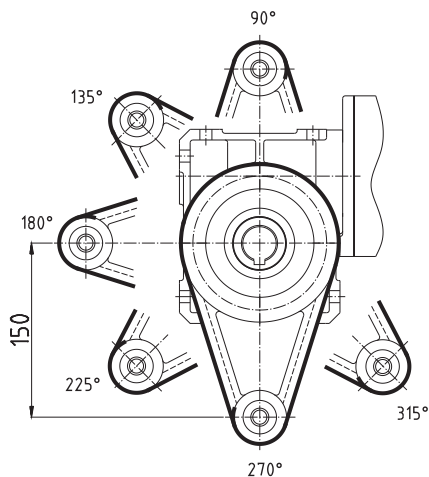


Abtriebsflansche B5



Drehmomentstütze

DA/I 90 .. DA/I 315



Abdeckhaube

HA

